

Skyflyer Automated Banner Hoist

4sight

greg@my4sight.co.uk
07941 672452



Motorized banner hanger in elegant design with 2 pcs. 3 m aluminum profiles (can be shortened). Easy mounting of single or double sided banner - sewed with hemstitch in top and bottom. Carries up to 10 metres long banners (max. 20 kg). Wireless remote control included. Delivered without banner.



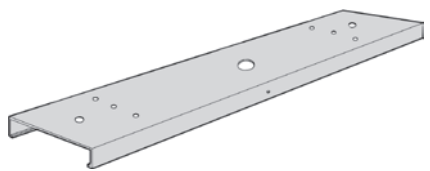
Banner size up to 3 x 10 m



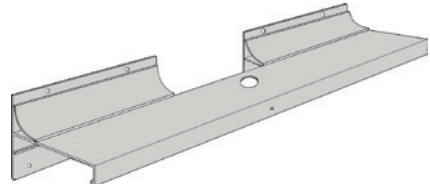
No need for lifts!

Easy banner change with remote control

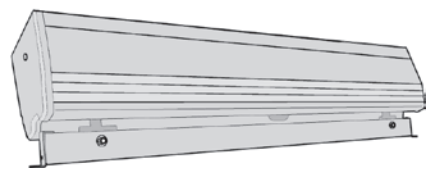




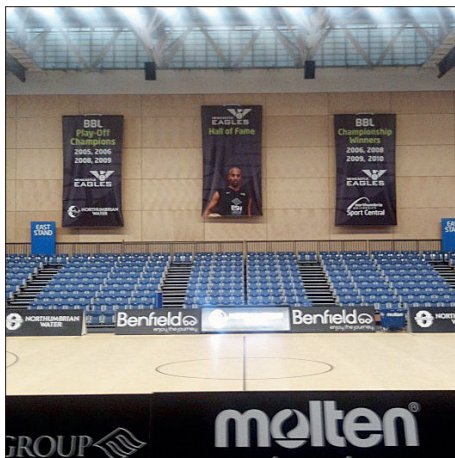
Bracket for ceiling mounting incl.



Bracket for wall mounting incl.



Body for banner mounting and a set of 1 meter alu-profiles incl. Profiles for extra width (up to 3 m) available - please ask!



01 For ceiling



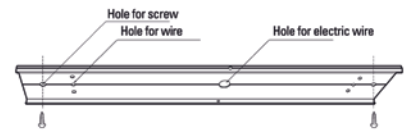
Important:
Installation of this sample must be performed only by a licensed electrician.

15 metres wire inside the body

03 Wire type

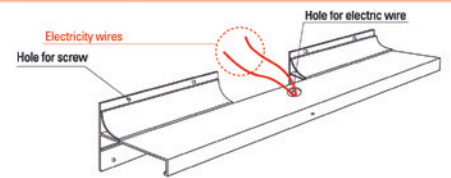


01 Fixing the bracket type (For ceiling)



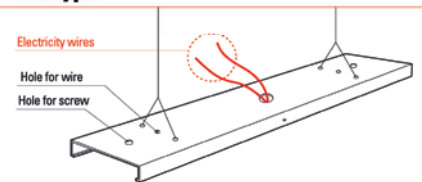
Please fix the basket with screw after deciding the place you want to fix.
Caution: In case of the ceiling of plasterboard, please install by frame of fixing for plasterboard for safety because it is in danger of falling.

02 Fixing the bracket type (For wall)



Please fix the basket with screw after deciding the place you want to fix

03 Fixing the wire type



Please fix the basket with screw after deciding the place you want to fix.
Caution: In case of the ceiling of plasterboard, please install by frame of fixing for plasterboard for safety because it is in danger of falling.

04 Fixing the body



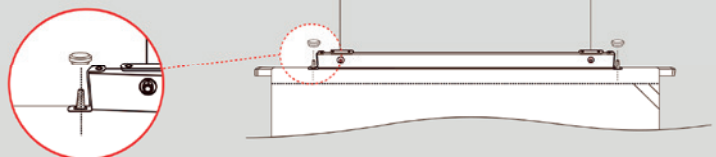
Please fix with screw of center after pushing the body in frame to right side or left side.

01 Installation of graphics



Caution: Please fix graphic like picture.

02 Fixing the aluminium bar.



Caution: Please fix graphic with screw like picture.



Operating instructions - how to use the remote controle

IMPORTANT:

In case of the first installation, power-off caused by blackout and to refix at other places:

Descend the aluminium bar by remote control (4-5m), then press **UP** button until the main body goes all the way up for initialisation.

Details of autoflying

Body Size : 880 x 100 x 119mm

Voltage : 220 volt/50Hz Maximum Load : 20 kg

How to use remote control

Please press die button continually for working, and you have to press stop button after using. For your reference, please press the stop button. when it arrives at the place you want after working.



Important Instruction

In case of first installation, power-off caused by black-out & to refix at other places, user has to descent aluminium bar by remote controll (4~5m), then please press UP button until the main body goes all the way up for initialization.



1. Push **DOWN** button.

2. When screen descends, push **STOP** button to stop it.

ONCE NEW GRAPHIC IS INSTALLED:

3. Push **UP** button and raise screen to the desired height.

4. Push **STOP** button to stop it.



IMPORTANT:

SAFETY INSTRUCTIONS.

- It is important for the safety of the operators/installers to follow these instructions and save these instructions.
- Do not allow children to play with fixed controls, remote control or appliance.
- Frequently examine the installation for imbalance and signs of wear or damage to cables and springs.
- Do not use if repair or adjustment is necessary.
- It is important to follow installation instructions as incorrect installation can lead to severe injury.

WARRANTY NOTICE.

The damages prescribed below are **NOT** to be covered by warranty:

- Users faults by lack of care.
- Unauthorised electric current connection defaults.
- Faults due to users undertaking repairs or dismantling appliance themselves.
- Damages caused by natural disaster such as fire, flood, earthquake, lightning etc.
- Replacement of new parts including adapter.

Shape or circuit or product are subject to change without any notice to improve the quality of the product.

④ sight

greg@my4sight.co.uk

07941 672452